



Connecting Families Presentation September 2013

Paula Bromley: Operational Lead

Connecting Families – Core Purpose

To enable families with multiple complex needs to receive the services they need to change and support them to achieve resilience, health and well being within their community

The Big Challenge

- Strategic Approach across The Council
- Data/evidence informed targeting
- Maximising investment across the partnership to reduce resources / duplication & maximize outcomes.
- Developing The Matrix Team

Connecting Families - Overview

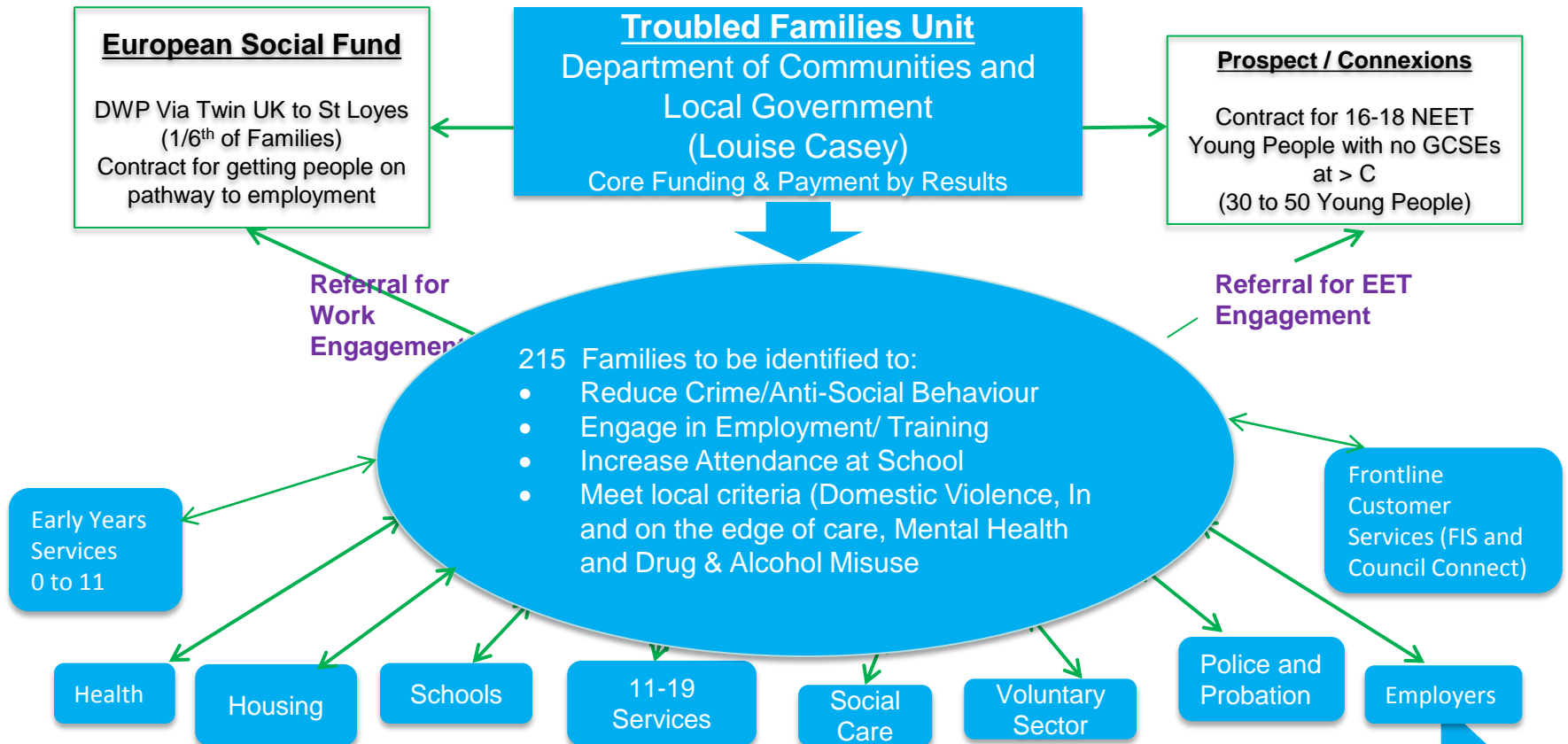
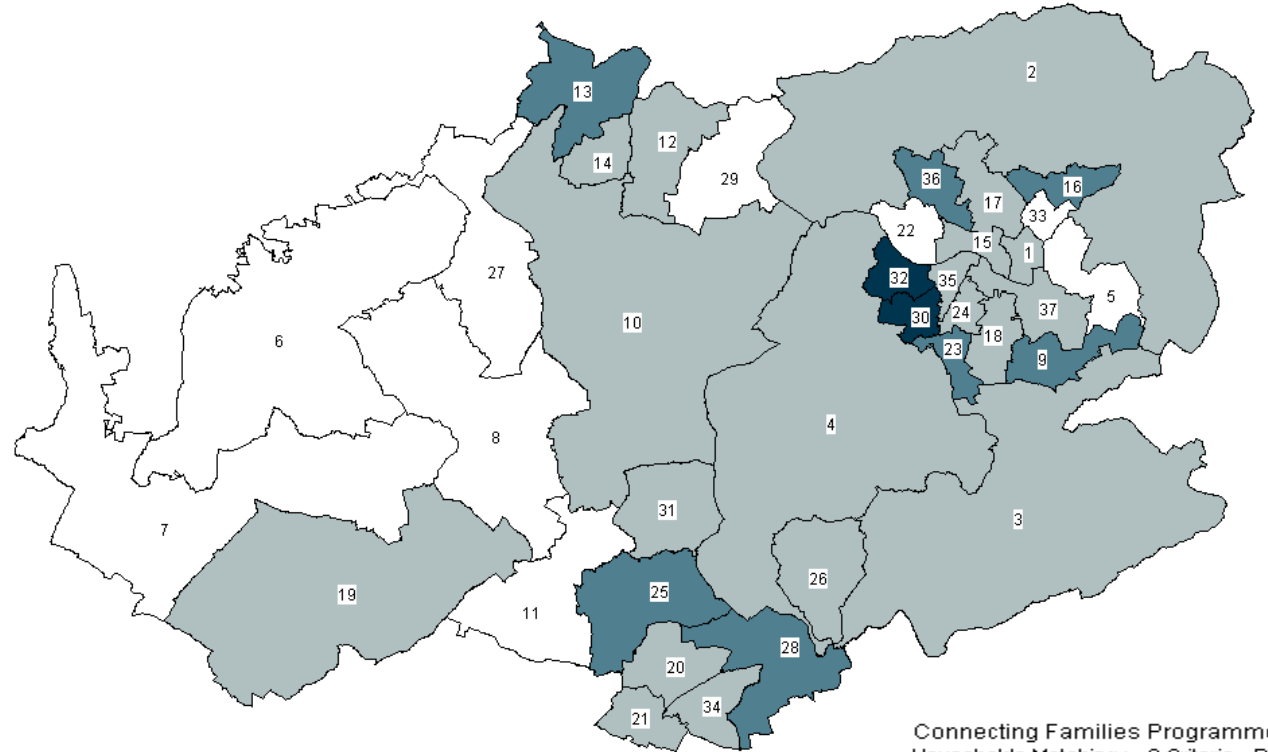


Fig. 1 Connecting Families
By Ward
Households Matching ≥ 2 Criteria

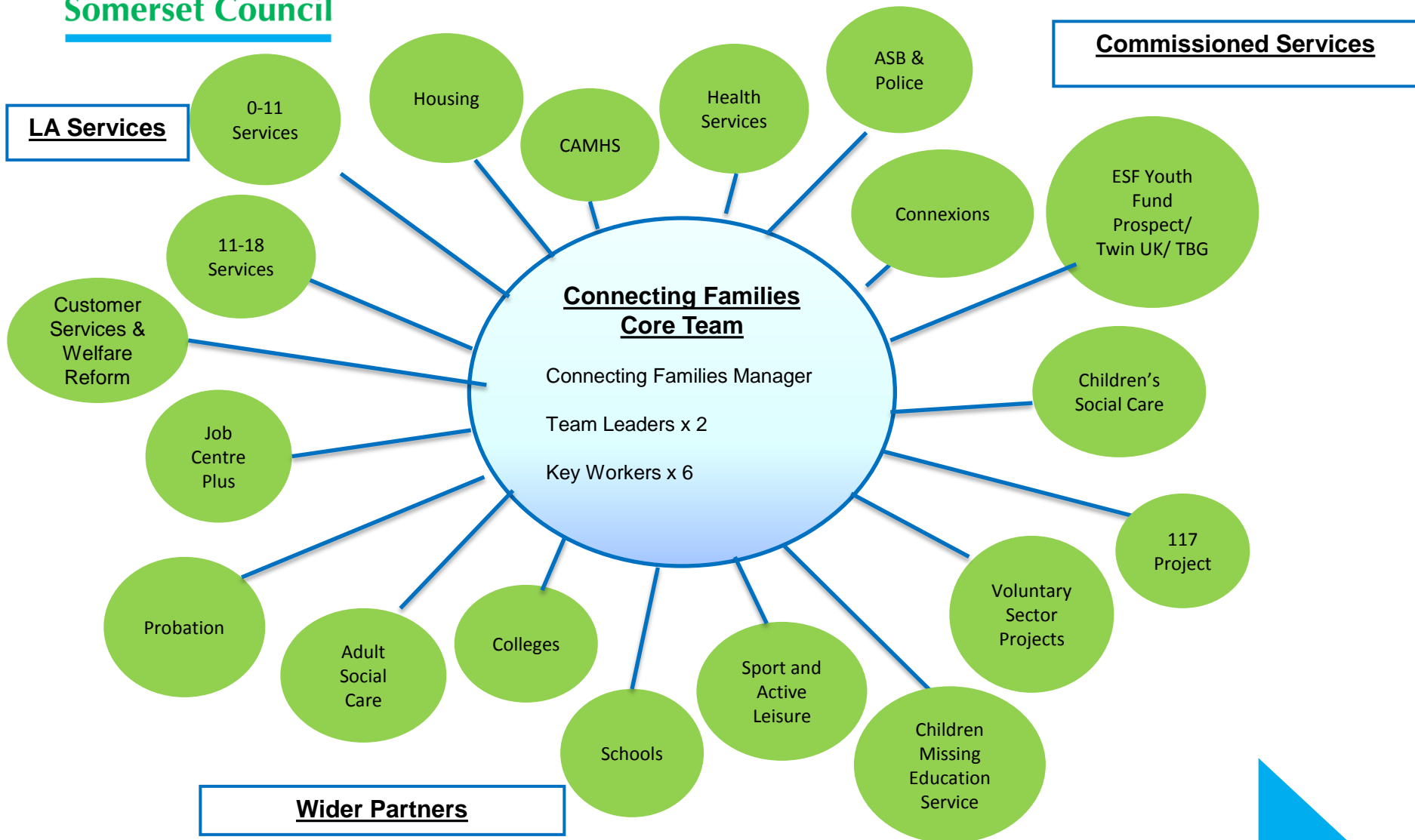
1. ABBEY WARD
2. BATHAVON NORTH WARD
3. BATHAVON SOUTH WARD
4. BATHAVON WEST WARD
5. BATHWICK WARD
6. CHEW VALLEY NORTH WARD
7. CHEW VALLEY SOUTH WARD
8. CLUTTON WARD
9. COMBE DOWN WARD
10. FARMBOROUGH WARD
11. HIGH LITTLETON WARD
12. KEYNSHAM EAST WARD
13. KEYNSHAM NORTH WARD
14. KEYNSHAM SOUTH WARD
15. KINGSMEAD WARD
16. LAMBRIDGE WARD
17. LANSDOWN WARD
18. LYNCOMBE WARD
19. MENDIP WARD
20. MIDSOMER NORTON NORTH WARD
21. MIDSOMER NORTON REDFIELD WARD
22. NEWBRIDGE WARD
23. ODD DOWN WARD
24. OLDFIELD WARD
25. PAULTON WARD
26. PEASEDOWN WARD
27. PUBLOW AND WHITCHURCH WARD
28. RADSTOCK WARD
29. SALT FORD WARD
30. SOUTHDOWN WARD
31. TIMSBURY WARD
32. TWERTON WARD
33. WALCOT WARD
34. WESTFIELD WARD
35. WESTMORELAND WARD
36. WESTON WARD
37. WIDCOMBE WARD



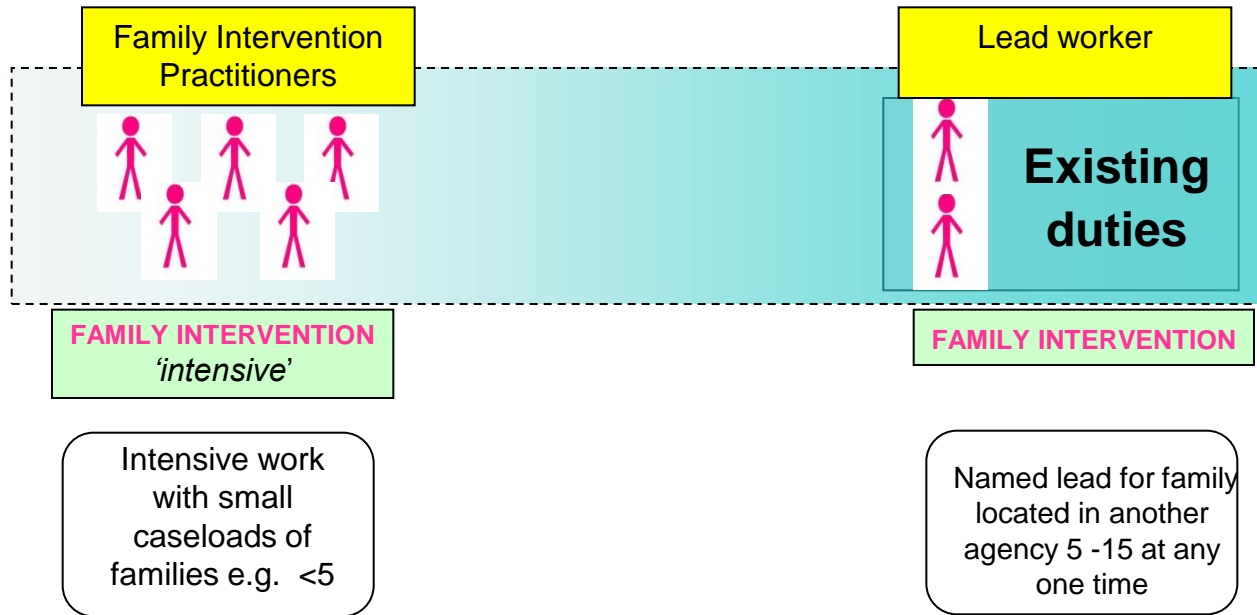
Connecting Families Programme
Households Matching ≥ 2 Criteria - By Ward

10 to 15	(2)
5 to 10	(7)
1 to 5	(19)
0 to 1	(9)

Services linked to the Connecting Families Team



The model from “Working with Troubled Families”



The 5 Family Intervention Factors

***One worker
dedicated to a
family***

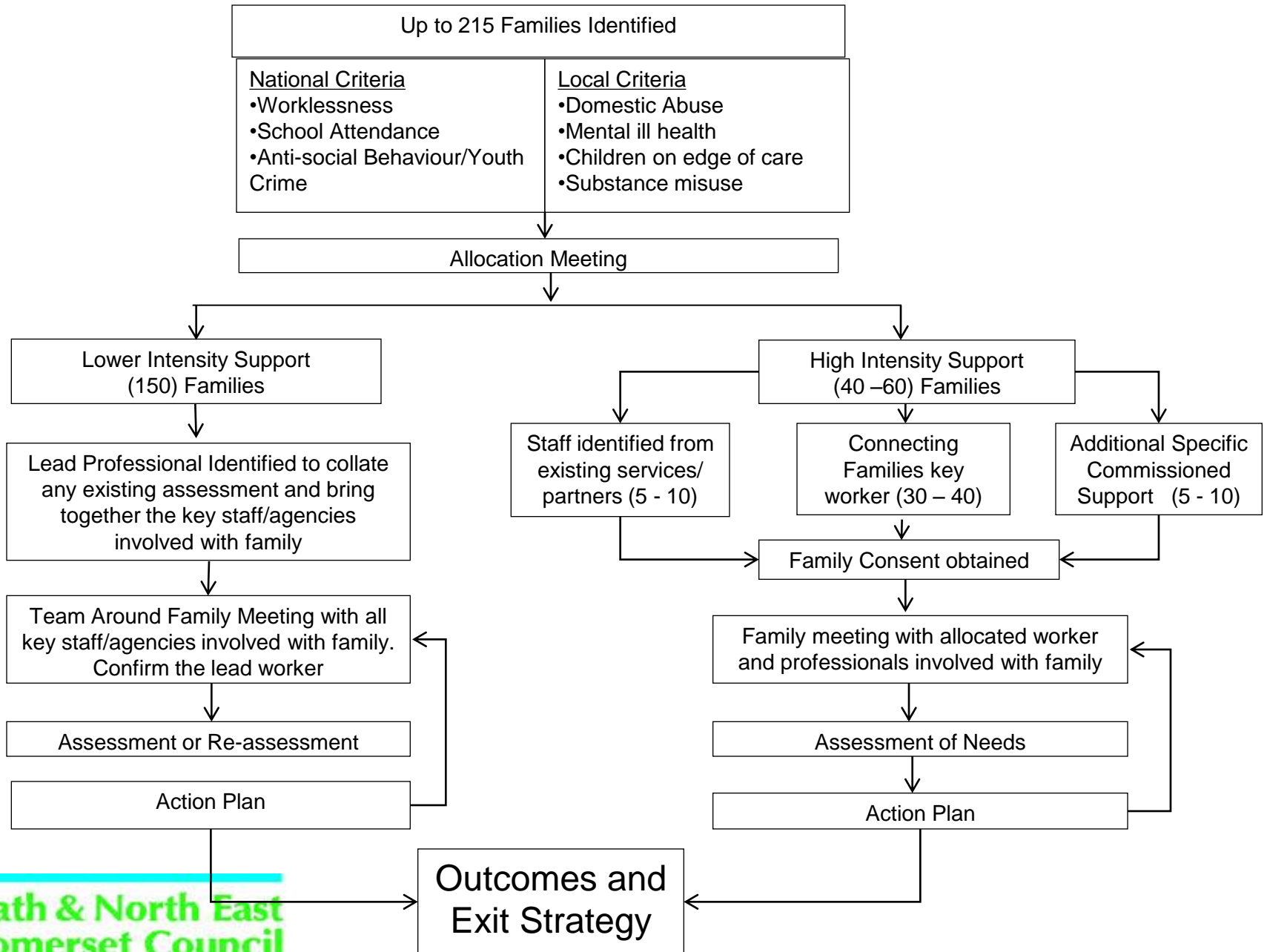
***Consider the
family as a
whole***

***Practical
hands on
Support***

***Persistent,
assertive and
challenging***

***Common
purpose and
agreed action***

Connecting Families Team – High Level Process Diagram



Impact / outcomes to date

One worker dedicated to a family

- » 35 Families engaged - Core Team
- » 103 Families engaged- Wider Partners
- » 16 Payment by Results (PbR) claimed
(including 2 progress to work) July2013

Impact / outcomes to date

Consider the family as a whole

- » Family Profile & action plan developed
- » 5 Assessments completed in the new style
- » Whole Family meetings taking place to develop family relationships

Impact / outcomes to date

Practical hands on Support

- » The Core Team has supported families to:
- » Clean, clear out and follow up any outstanding repairs
- » Work with key partners especially the Social Landlords to provide essential repairs.
- » Provide fun families activities to enhance family cohesion
- » Support families to manage their money, reduce debt, apply for work & training

Impact / outcomes to date

Persistent, assertive and challenging

- » The team works with key partners to link with families re challenge & sanctions especially Education Welfare, YOT, Probation, The Police & Social Landlords
- » The team will provide honest feedback to families in order to progress

Impact / outcomes to date

Common purpose and agreed action

- » Family Profile & Action Plans drafted and all staff working with families to complete these
- » All staff to consider PbR as well as the families needs e.g. support to reduce debt.
- » Regular Team Around the Family Meetings with other key professionals help to review progress and update the family action plan to coordinate services & reduce duplications



Any Questions